

Outdoor Power Cabinet with Battery Shelf

-54.3VDC / 15A Output

LORS-415L

Product Features:

- Outdoor Rectifier system
- Modular design for accommodating high power applications and easy maintenance
- Using by Li-ion Battery(-48V/10AH)
- Battery Charger and Monitor
- Full Featured Status and Alarms(Dry contact)
- Convection Cooling Type(No fan)



Input Specifications:

VOLTAGE	1Ø3W220VAC
VOLTAGE RANGE	176VAC ~ 264VAC(±20%)
FREQUENCY	47-63Hz
INRUSH	30A @ 220VAC(Max Cold Start) per Module
LEAKAGE	3.5mA Max @ 264VAC per Module
EFFICIENCY	90% Typical per Module
POWER FACTOR	98% Typical
PROTECTION	Input Low voltage, Over voltage
Input Port	AC Input Port(15A) 1EA

Output Specifications:

Vout	-54.0VDC
Iout	15Amax, 810W
Output Port	Battery(20A) 1EA, RRUS(15A) 1EA
ADJUSTMENT RANGE	-43.0 VDC ~ -54.6VDC
LINE REGULATION	±1% Max over entire input range
LOAD REGULATION	±1% Maximum
RIPPLE	≤ 250mVp-p(10Hz~14MHz)
OVER CURRENT	101~130%
OVER VOLTAGE	-54.6VDC(±0.3VDC)
PROTECTION	Output High Voltage, High Current DC Over Voltage Shutdown Thermal Shutdown Batter Over discharge

Status & Control Signals:

COMMUNICATED INTERFACE Dry Contact(2Ports) : Normal Open

General Specifications:

OPERATING TEMP	-30 °C to +50 °C
STORAGE TEMP	-40 °C to +85 °C
OPERATING HUMIDITY	10% to 90% (non-Condensing)
STORAGE HUMIDITY	5% to 95% (non-Condensing)
COOLING	Natural Convection
RELIABILITY	100,000 Hrs MTBF
SIZE(W × D × H),	260x220x650mm(Power Cabinet)
WEIGHT	20.5Kg(Include Module, Battery)

Electromagnetic Compatibility:

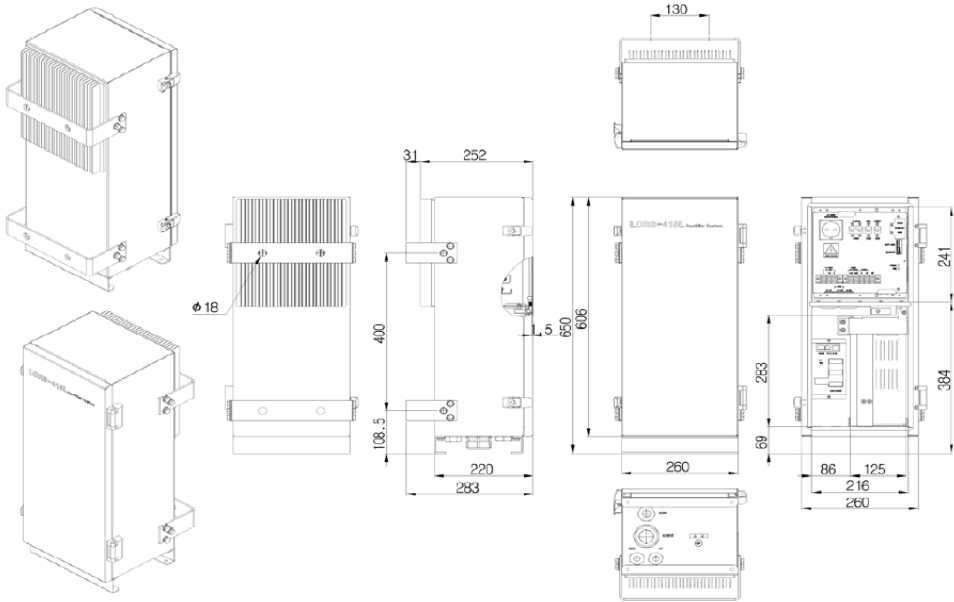
EMISSIONS	EN55022 Level A (Conducted)
ELECTROSTATIC(ESD)	EN61000-4-2, 4KV Contact / 8KV Air
RADIATED SUSCEPTIBILITY	EN61000-4-3, 26-1000MHz, 10V/M, 80%AM
EFT/BURSTS	EN61000-4-4, 2KV
SURGE	EN61000-4-5
CONDUCTED IMMUNITY	EN61000-4-6, 0.15-800MHz, 10V 80%
VOLTAGE DIPS	EN61000-4-10, 95% Dip&10ms, 30% Dip&500ms
VOLTAGE INTERRUPTIONS	EN61000-4-11, 95% Reduction, 5ms

Electromagnetic Compatibility:

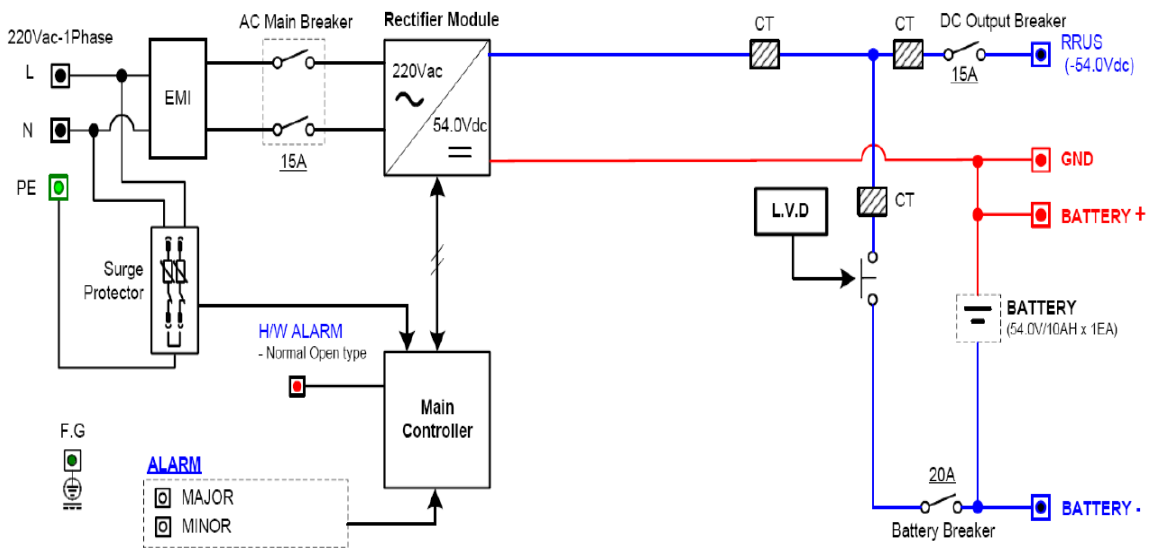
UL/CUL 60950-1



Dimension :



Block Diagram :



Li-Ion Polymer Battery
-48.0VDC / 10AH Output

UPB 4810

Product Features:

- Li-ion Polymer Battery
- Managing by BMS
Protection Rectifier & Charging Battery
- Made in LG Chemical



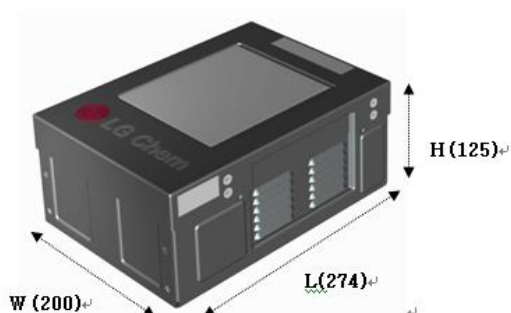
General Specifications:

VOLTAGE	50.4V(54.3V Max)
CURRENT	10AH
RECHARGE CONDITION	Method CC / CV 5A / 54.3V End of Current 500mA
DISCHARGE CONDITION	Method CC
OPERATING TEMP	-30 °C to +60 °C
STORAGE TEMP	-30 °C to +60 °C
OPERATING HUMIDITY	10% to 90% (non-Condensing)
STORAGE HUMIDITY	5% to 95% (non-Condensing)
SIZE(W×D×H)	200x274x125mm
WEIGHT	7.5Kg

BMS(Battery Management System):

MAX RECHARGE VOLTAGE	54.3V
AVERAGE DIS/CHARGE CURRENT	2A / 5A
MAX DIS/CHARGE CURRENT	30A / 9A
INTERFACE	RS232
PROTECTION BY BMS	Over charge / Discharge High Current High Temperature

Dimension :



Block Diagram :

