

Product Features:

- Hot pluggable
- Controlled, measured and reported by RS232, RS485, Modbus TCP
- Modular design for accommodating high power applications
- 19Inch Rack Mount Type



Input Specifications:

VOLTAGE	1P3W 230VAC (176~264Vac) or 3P4W 380VAC (304~456Vac)
FREQUENCY	57-63Hz
PROTECTION	Under & Over voltage
EFFICIENCY	94% more

Output Specifications:

VOLTAGE	Default -54.0VDC
CURRENT	200A Max (4 modules) -43VDC~-56VDC
ADJUSTMENT RANGE	±0.5% Max
LINE REGULATION	±1.0% Max
LOAD REGULATION	±1.0% Max
NOISE	≤ 300mVp-p
SETPOINT ACCURACY	106~130%
OVER CURRENT	-57VDC over
PROTECTION	(recycle input to reset), Thermal Shutdown

General Specifications:

OPERATING TEMP	-40°C to +75°C (Derating above +45°C)
STORAGE TEMP	-40°C ~ +80°C
OPERATING HUMIDITY	0% ~ 90% (Non-Condensing)
STORAGE HUMIDITY	0% ~ 95% (Non-Condensing)
COOLING	Fan cooling
ALTITUDE	2,000Meter
SIZE (W×D×H)	482.6mm X 500mm X 132.2mm

Status & Control signal:

COMMUNICATION- INTERFACE	RS232, RS485, TCP/IP, CAN
-----------------------------	---------------------------

Standards & Approvals:

EMI	FCC Part 15b Class A
-----	----------------------

DNM-48V/50A

Product Features:

- Modular Design
- 1U Rack Mountable
- DSP Controller
- LED alarm indicated
- Hot pluggable
- Energy saving operation



Input Specifications:

VOLTAGE	1Ø220VAC (85VAC ~ 297VAC) (Nominal 176~264Vac)
FREQUENCY	45-66Hz
INRUSH CURRENT	25A @ 220AVC
PROTECTION	Mains fuse in both lines
LEAKAGE	3.5mA Max @ 220VAC
EFFICIENCY	94% more
POWER FACTOR	> 0.98at 50% load or more
PROTECTION	Input Under voltage, Overvoltage

Output Specifications:

VOLTAGE	54.0VDC
CURRENT	50A (2,700W)
ADJUSTMENT RANGE	42.0~58.0VDC
LINE REGULATION	±0.5% Max over entire input range
LOAD REGULATION	±0.5% Maximum
TEMP REGULATION	±0.5% Maximum
RIPPLE	≤ 300mVp-p(3KW)
SETPOINT ACCURACY	±0.5%
OVER VOLTAGE PROTECTION	59VDC (recycle input to reset) Power derated, Thermal Shutdown

General Specifications:

OPERATING TEMP	-40°C to +75°C, (Derating above +45°C)
STORAGE TEMP	-40°C to +85°C
OPERATING HUMIDITY	0% to 95% (Non-Condensing)
STORAGE HUMIDITY	5% to 95% (Non-Condensing)
COOLING	Controlled Fan in a module
ACOUSTIC NOISE	≤58dBA at nominal input and full load
RELIABILITY	>350,000 Hrs MTBF (Ambient : 25°C)
SIZE (W×D×H)	108mm × 340mm × 44mm

Status & Control signals:

COMMUNICATION	CAN
---------------	-----

Product Features :

- RS-232 interface for PC connection, and TCP/IP-enabled SFP interfaces for high-speed network communication
- Adjustable output voltage
- Comprehensive system alarms (AC, DC, Module, and Battery)

Display :

- Status of the rectifier system is displayed on the LCD
 - Output and input voltage
 - Output load current
 - Battery temperature and current
 - Rectifier system setup values and alarms
 - Output current for individual rectifier modules.

Analog Measurements :

- Rectifier input AC voltage
- Rectifier output DC voltage
- Rectifier load current
- Battery temperature

Controller Unit Function :

- Failure of the rectifier controller shall not affect the operation of the rectifiers in the system
 - Store and display 1,000 event alarm logs and 1,000 data logs
 - †Digital input alarm (User-defined alarms including AC, DC, module, and battery faults)
 - †Dry contact alarm (User-defined external alarm outputs)
- † : The number of alarms can vary depending on the shelf

Battery Managements :

- Measurement and display of battery charge/discharge current, battery set status, total output, and battery temperature
- Manual, float, and equal charging modes exchangeable
- Battery charging current limiting
- Temperature-compensated charge voltage for increased battery lifetime
- Setting of battery temperature compensation curve

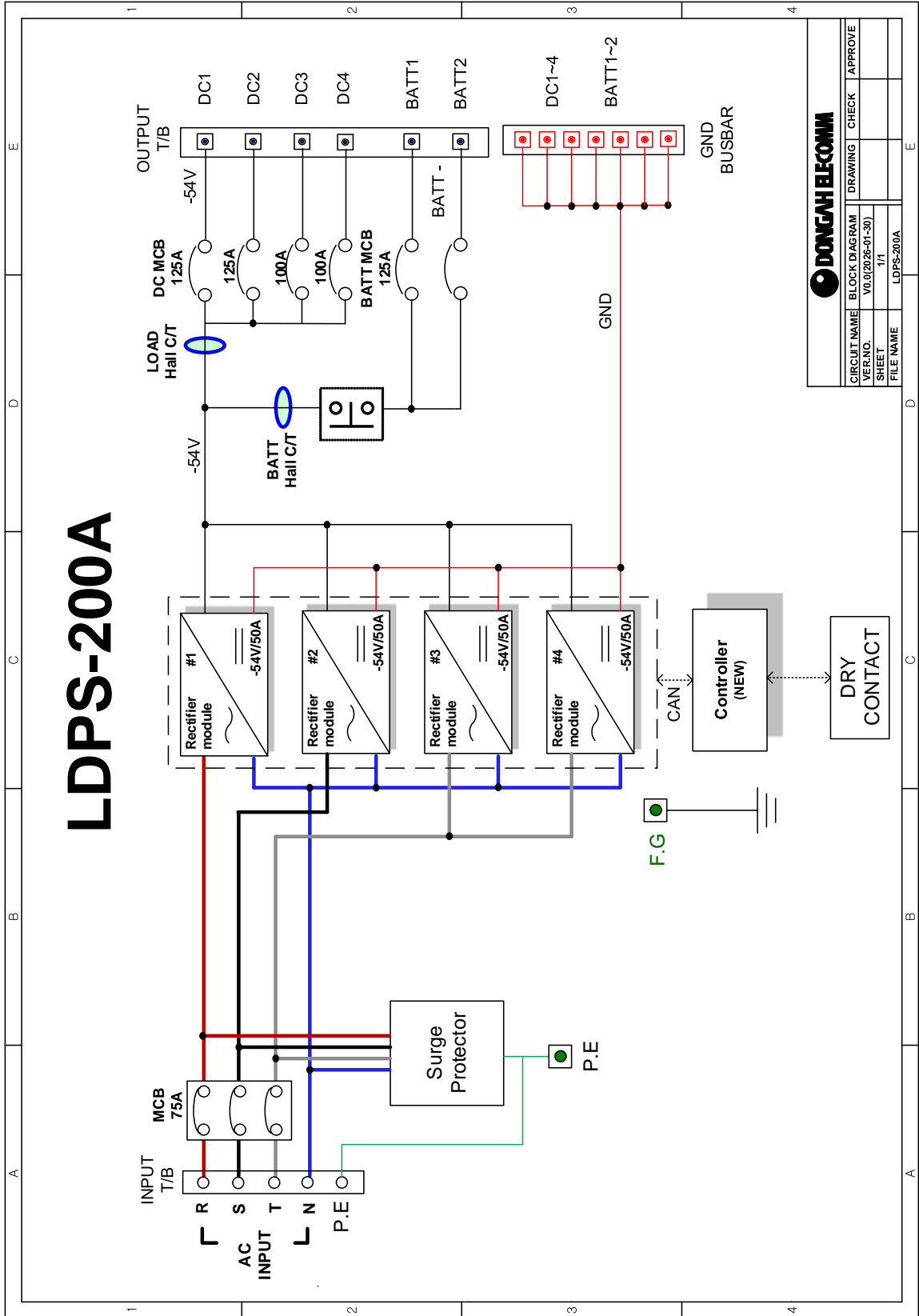
CPU :

- ARM Cortex-M4 core with DSP instructions
- CPU clock speed : Up to 100 MHz
- 16-channel DMA controller
- Memory : 512 KB flash and 128 KB SRAM
- Supports FlexMemory architecture
- Integrated Ethernet MAC and UART
- Support RTOS

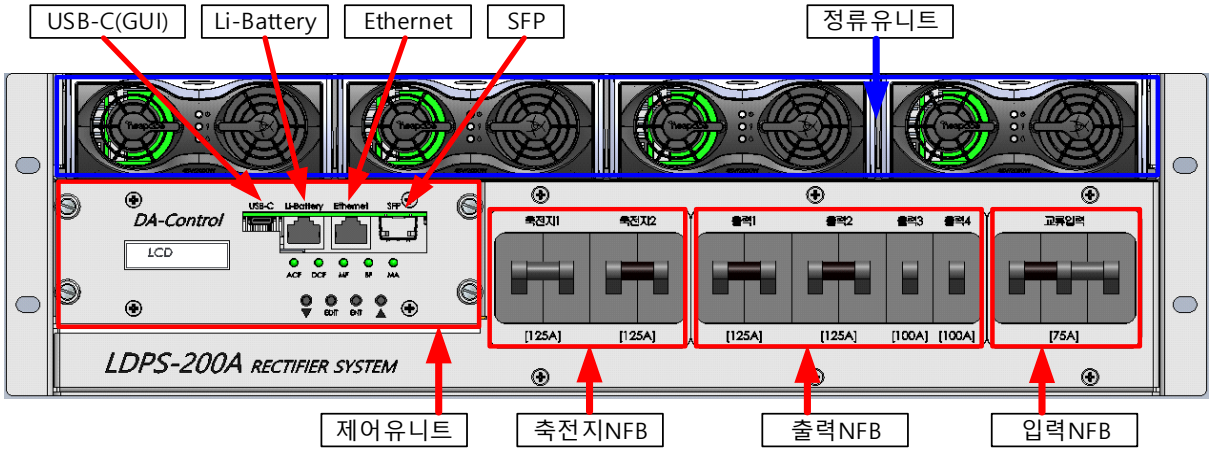
Interface :

- RS232
 - Baud rate : 115,200 bps, Data bits : 8 bits, Parity : None, Stop bits : 1 bit, Flow control : None
- LAN and SFP
 - Supports TCP/IP protocol stack
 - 10BASE-T/100BASE-TX/1000BASE-T Gigabit Ethernet via copper LAN
 - 100BASE-FX/1000BASE-X Gigabit Ethernet via SFP fiber optic
 - Auto-negotiation and auto-MDI/MDIX support





Front View:



Rear View:

